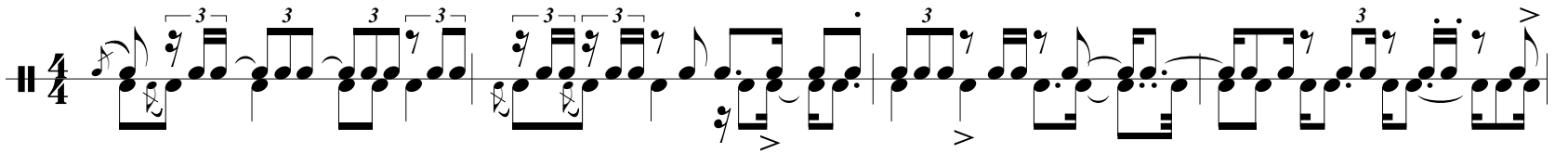


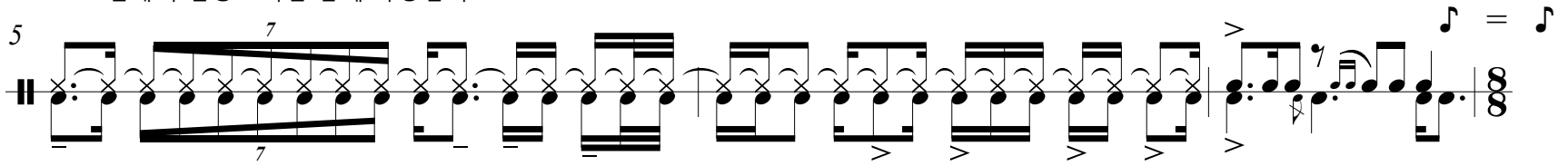
장 구

♩ = 100

Staccato : 다

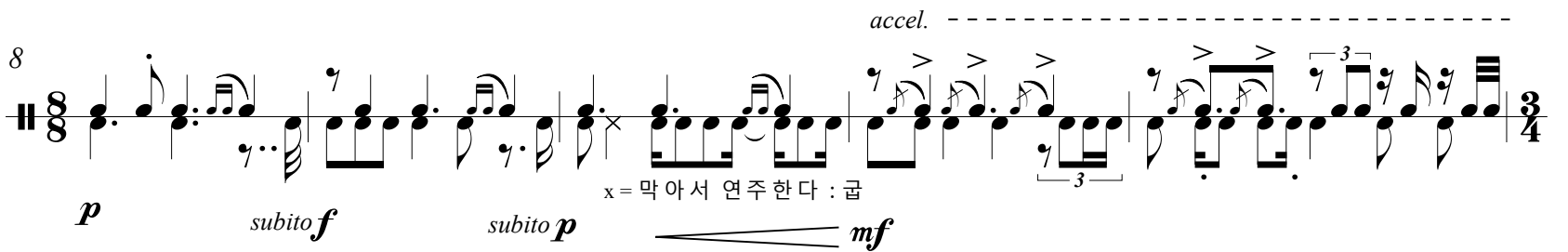


열채를 채편복판에 붙여연주한다
*열채의 진동소리를 함께 사용한다



subito *p*

f



p

subito *f*

subito *p*

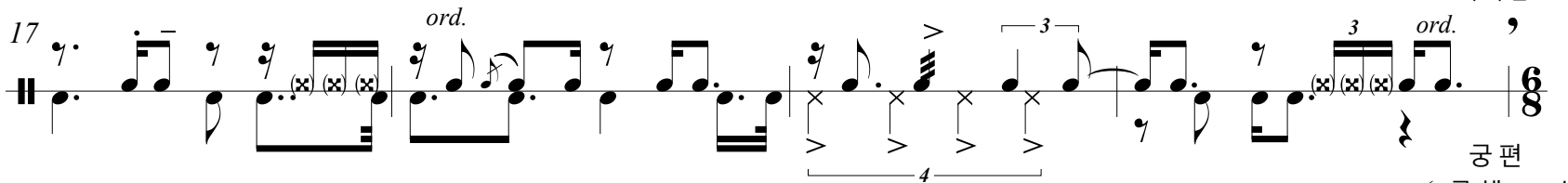
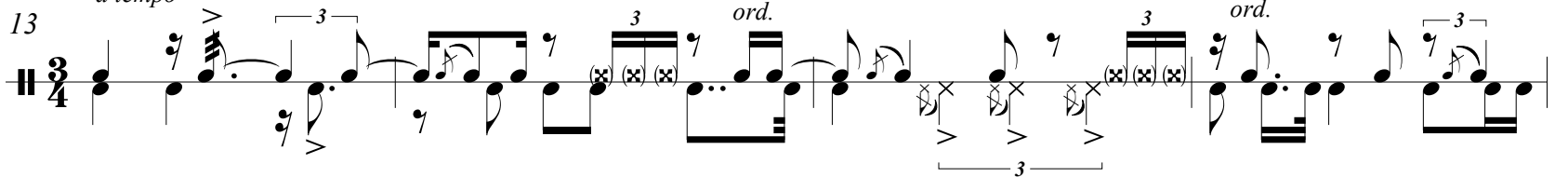
mf

♩ = 104

--- a tempo

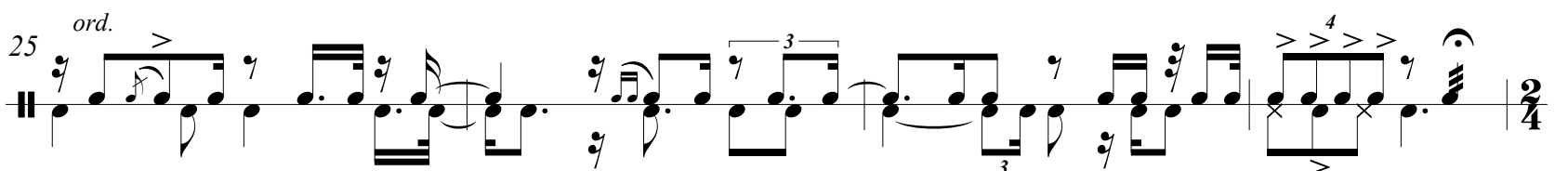
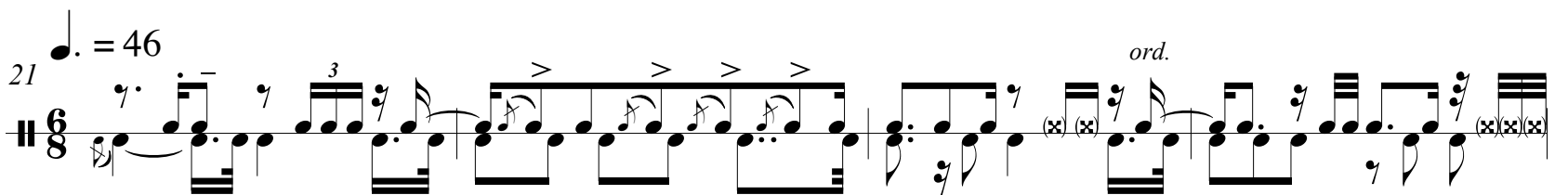
Tremolo : 더러러

(x) = 변죽



호흡을
가다듬고

궁편
(궁채 → 손)



f

subito *p*

궁편
(손 → 궁채)

♩ = 86

29 *fp* *ff* *fp*

33 *f*

♩ = 100

37 *fp* *f* *pp* *rit.*

----- *a tempo*

40 *subito f*

43 *ff*

46 *fp* *fff*